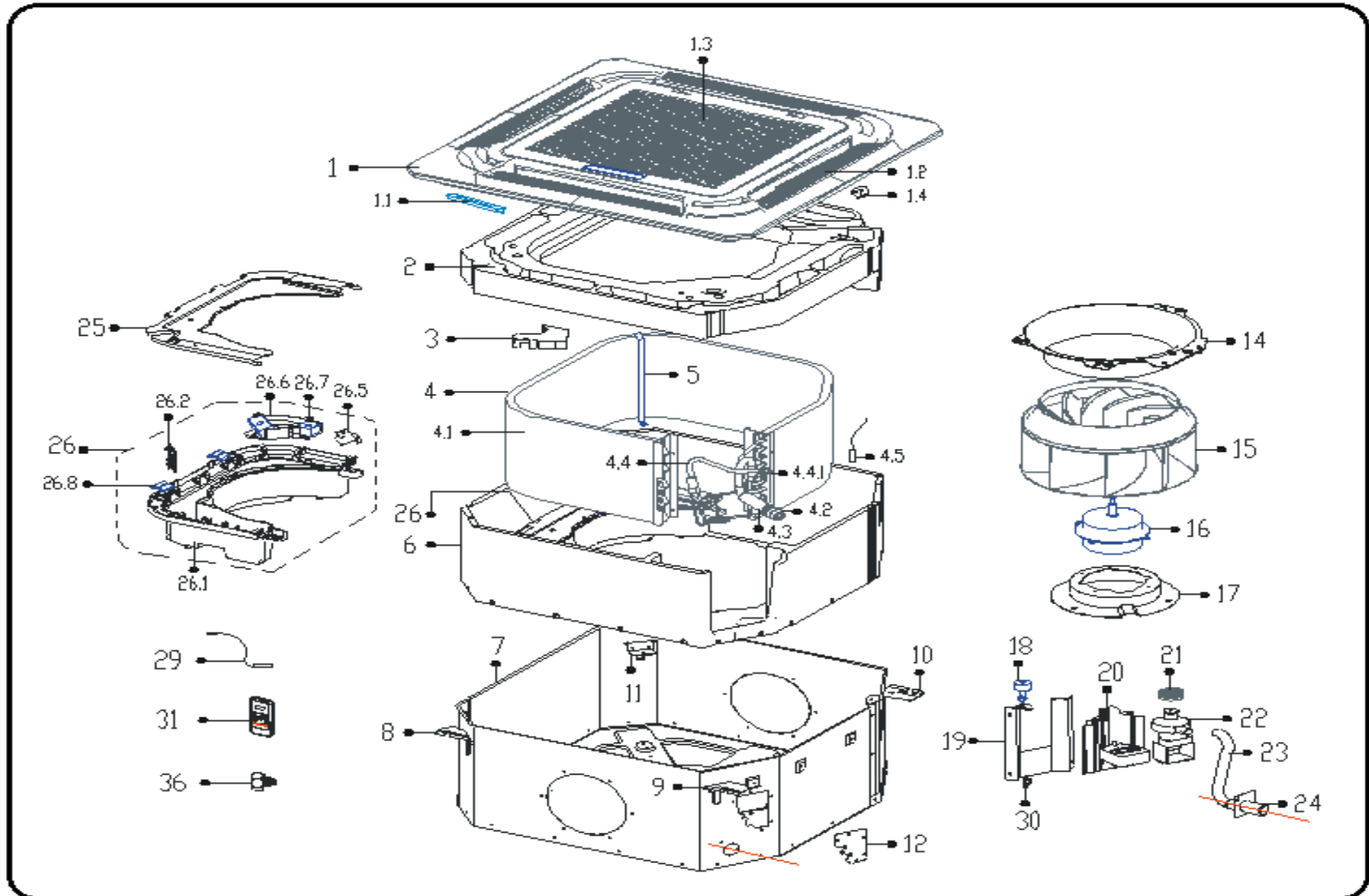


EXPLODED DIAGRAM - PARTS VIEW

Model : KTIM012-H2

Power Supply 208-230V~ 60Hz 1ph



This information is to be used by qualified AC technicians only

KTIM1216- Drawing No. D2IT16121301

Above information subject to revision without notice

DATE 13-01

KTIM012-H2 - SPARE PARTS LIST

Item No.	Part No.	Part Name	Specifications	Stock No.	Qty	Price	Remarks
1	M I 1 1 0 9 9 9 1 8 2 1	Panel			1	\$ 127.26	
1.1	M I 3 3 4 2 0 9 0 0 0 8	Display box assembly			1	\$ 138.96	
1.2	M I 1 1 0 9 9 9 1 7 9 7	Horizontal louver			4	\$ 40.04	
1.3	M I 0 0 0 0 4 5 3 1 2 7	Air filter			1	\$ -	
1.4	M I 2 4 0 0 2 8 0 0 0 1	Louver motor			1	\$ 132.72	
2	M I 2 2 8 0 4 9 0 0 0 6	Water collector			1	\$ -	
3	M I 1 1 8 0 4 9 0 0 4 7	Wire box			1	\$ 21.00	
4	M I 1 5 4 2 3 9 0 0 0 4	Evaporator assembly			1	\$ 1,002.44	
4.1	M I 1 5 4 2 3 9 0 0 0 2	Evaporator			1	\$ 766.61	
4.2	M I 1 6 0 0 3 2 0 0 0 2	Copper nut			1	\$ 53.68	
4.3	M I 1 6 4 2 3 9 0 0 0 4	Output pipe assembly			1	\$ 151.65	
4.4	M I 1 6 4 2 3 9 0 0 0 6	Input pipe assembly			1	\$ 164.25	
4.4.1	M I 1 6 0 0 3 2 0 0 0 0	Copper nut			1	\$ 21.00	
4.5	M I 2 3 0 1 3 0 0 4 4 5	Pipe temperature sensor assembly			1	\$ 40.04	
5	M I 1 2 8 0 4 9 0 3 3 6	Evaporator hang board			1	\$ 21.00	
6	M I 2 2 8 0 4 9 0 0 0 5	Base foam assembly			1	\$ -	
7	M I 1 2 4 2 3 9 0 0 0 3	Chassis assembly			1	\$ 545.48	
8	M I 1 2 8 0 4 9 0 4 8 3	Hook II			1	\$ -	
9	M I 1 2 8 0 4 9 0 4 8 2	Hook I			1	\$ -	
10	M I 1 2 8 0 4 9 0 4 8 5	Hook IV			1	\$ -	
11	M I 1 2 8 0 4 9 0 4 8 4	Hook III			1	\$ -	
12	M I 1 1 4 2 3 9 0 0 0 1	Pipe fixing board assembly			1	\$ -	

This information is to be used by qualify technicians only

KTIM1216- Part list No. P2IT16121301

Above prices, numbers, specifications subject to revision without notice

Drawing No. D2IT16121301

Above prices are subject S & H charges

DATE 13-01

KTIM012-H2 - SPARE PARTS LIST

Item No.	Part No.	Part Name	Specifications	Stock No.	Qty	Price	Remarks
14	M I 1 1 4 2 3 9 0 0 0 3	Ventilation ring			1	\$ 132.72	
15	M I 1 1 0 0 1 1 0 0 0 1	Centrifugal fan			1	\$ 545.48	
16	M I 2 4 0 0 3 0 0 0 5 2	Asynchronous motor			1	\$ 1,739.54	
17	M I 1 2 8 0 4 9 0 3 3 8	Fan motor fixing base			1	\$ 126.36	
18	M I 2 3 0 1 8 0 0 9 1 6	Water level switch			1	\$ 117.92	
19	M I 1 2 8 0 4 9 0 3 3 7	Evaporator fixing board			1	\$ 53.68	
20	M I 1 1 8 0 4 9 0 0 4 9	Drain pump installation base			1	\$ 40.04	
21	M I 1 1 8 0 4 9 0 0 4 1	Guard against block up net			1	\$ 21.00	
22	M I 2 4 0 0 6 0 0 0 0 5	Drain pump			1	\$ -	
23	M I 2 7 4 2 3 9 0 0 0 1	Drain pipe			1	\$ 88.41	
24	M I 1 1 4 2 4 0 0 0 0 2	Drain connecting pipe			1	\$ -	
25	M I 1 2 8 0 4 9 0 4 9 1	Cover of electronic control box			1	\$ 103.22	
26	M I 3 3 4 2 3 9 0 0 9 9	Electronic control box assembly			1	\$ 1,113.00	
26.1	M I 1 1 8 0 4 9 0 0 4 3	Electronic control box			1	\$ 217.96	
26.2	M I 1 3 4 2 3 9 0 0 9 6	Main control board assembly			1	\$ 818.16	
26.5	M I 1 2 8 0 4 9 0 4 7 1	Insulation plate			1	\$ 21.00	
26.6	M I 1 1 8 0 4 9 0 0 4 4	Installation base of terminal			1	\$ 21.00	
26.7	M I 2 3 0 1 4 2 0 1 0 1	Wire joint			1	\$ 53.68	
26.8	M I 1 1 8 0 4 9 0 0 4 5	Clip			3	\$ 21.00	
29	M I 2 3 0 1 3 1 0 0 7 5	Ambient temperature sensor assmby			1	\$ 40.04	
30	M I 2 7 8 0 4 9 0 0 0 7	Rubber guard bush			1	\$ -	
31	M I 3 3 5 5 0 9 1 5 3 4	Remote controller			1	\$ 246.38	
36	M I 1 6 5 0 2 9 0 2 4 1	Transfer connecter			1	\$ 103.22	

This information is to be used by qualify technicians only

KTIM1216- Part list No. P2IT16121301

Above prices, numbers, specifications subject to revision without notice

Drawing No. D2IT16121301

Above prices are subject S & H charges

DATE 13-01