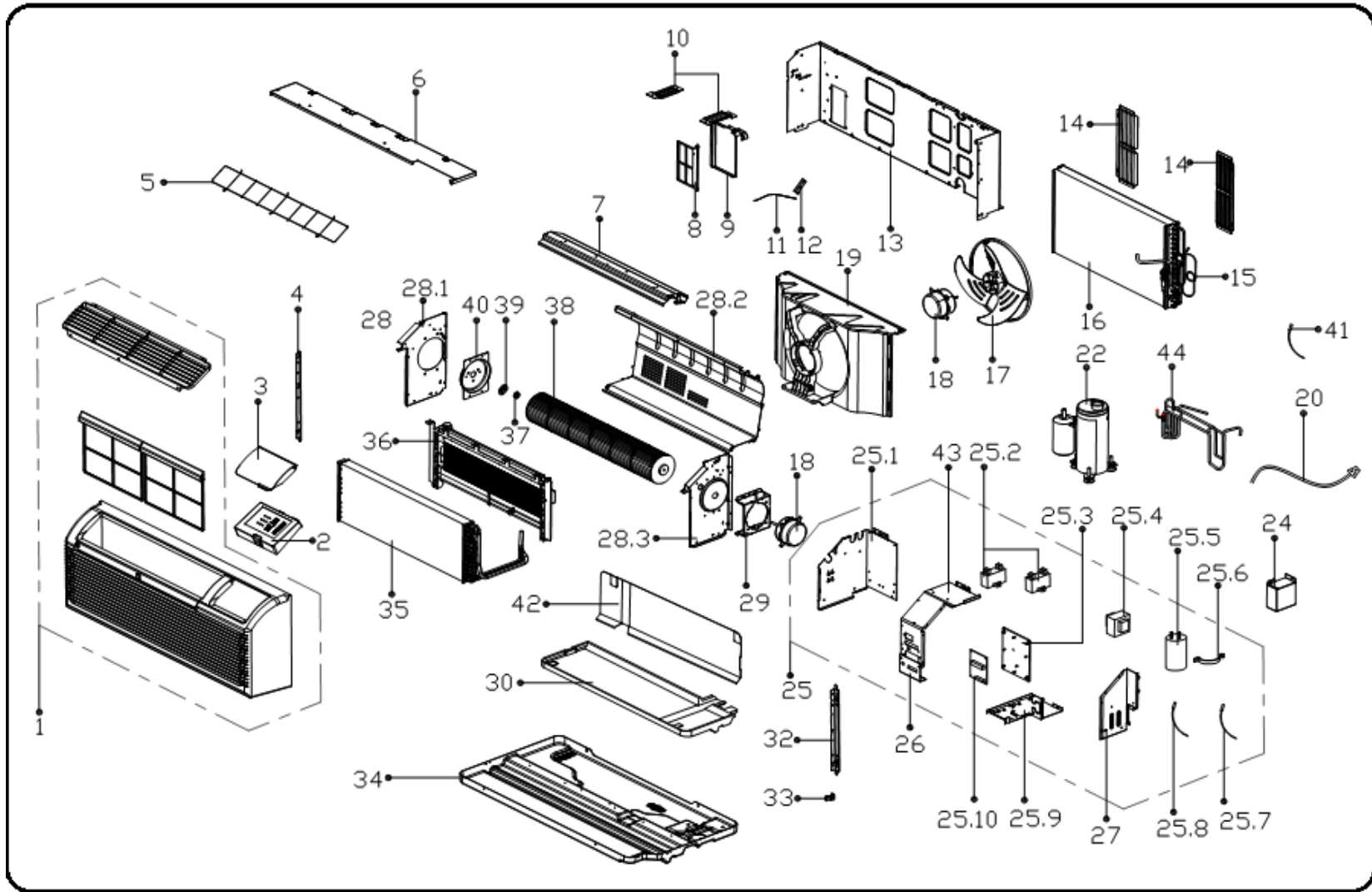


EXPLODED DIAGRAM - PARTS VIEW

Model: KTHM007-E3H2-BM

Power Supply: 208-230V~ 60Hz 1ph



KTHM007-E3H2-BM - Drawing No. D5HM1404

This information is to be used by qualified HVAC technicians only and is subject to revision without notice

DATE 14-03

KTHM007-E3H2-BM - SPARE PARTS LIST

| No. | Part Number | Part Name | Specifications | Stock No. | Qty. | Price | Remarks |
|------|--------------|-----------------------------------|----------------|-----------|------|----------|------------------|
| 1 | 201121890174 | Panel frame assembly | | | 1 | \$179.46 | |
| 2 | 203321790300 | Display box assembly | | | 1 | \$58.52 | |
| 3 | 2011217A0824 | Cover of control panel | | | 1 | | |
| 4 | 201221790255 | Fixing board(left) | | | 1 | \$5.78 | |
| 5 | 201221890087 | Air filter | | | 1 | \$23.70 | |
| 6 | 201221790247 | Front cover assembly | | | 1 | \$39.76 | |
| 7 | 201221890086 | Volute shell assembly | | | 1 | \$30.50 | |
| 8 | 201121790309 | Fresh air door filter | | | 1 | \$2.31 | |
| 9 | 201221790259 | Fresh air door | | | 1 | \$6.93 | |
| 10 | 201221790236 | Linker for front separating board | | | 2 | \$1.98 | |
| 11 | 201221790240 | Wire, fresh air door | | | 1 | \$1.98 | |
| 12 | 201221790239 | Connecting rod of fresh air door | | | 1 | \$0.66 | |
| 13 | 201221790246 | Front separating board | | | 1 | \$88.31 | |
| 14 | 202921790001 | Horizontal louver | | | 2 | \$12.15 | |
| 15 | 201621290186 | Capillary assembly | | | 1 | \$44.75 | |
| 16 | 201521490087 | Condenser assembly | | | 1 | \$221.40 | |
| 17 | 201100300049 | Axial flow fan | | | 1 | \$44.24 | ZL-335*102*8-3FN |
| 18 | 202400401220 | Asynchronous motor | | | 1 | \$159.93 | YDK30-4B |
| 18 | 202400401221 | Asynchronous motor | | | 1 | \$125.28 | YDK20-6BS |
| 19 | 201121790307 | Rear separating | | | 1 | \$80.07 | |
| 20 | 202419990025 | Power cord | | | 1 | | |
| 22 | 201400603021 | Compressor | | | 1 | \$388.08 | PA58G0C-3DZD |
| 24 | 201221790251 | Wire box | | | 1 | \$8.58 | |
| 25 | 2033212A0177 | Electronic control box assembly | | | 1 | | |
| 25.1 | 201221790252 | Cover of electronic control box | | | 1 | \$24.90 | |
| 25.2 | 202401100353 | Fan motor capacitor | | | 1 | \$8.25 | 3uF/450V |
| 25.2 | 202401100004 | Fan motor capacitor | | | 1 | \$3.63 | 1uF/450V |
| 25.4 | 201121790312 | Bracket of main control board I | | | 1 | \$6.44 | |

This information is to be used by qualified HVAC technicians only and is subject to revision without notice

KTHM007-E3H2-BM - Parts List No. P5HM1404

Above prices are subject to S&H charges

DATE 14-03

KTHM007-E3H2-BM - SPARE PARTS LIST

| No. | Part No. | Part No. | Specifications | Stock No. | Qty. | Price | Remarks |
|-------|--------------|---------------------------------------|----------------|-----------|------|----------|-----------------|
| 25.5 | 202300900727 | Transformer | | | 1 | \$66.68 | TT2-G95-1F |
| 25.6 | 202401000303 | Capacitor of compressor | | | 1 | \$24.80 | 20UF/450V-45-P2 |
| 25.7 | 201200100005 | Capacitor clip | | | 1 | \$0.66 | |
| 25.8 | 202440220061 | Ambient temperature sensor assembly | | | 1 | \$6.11 | |
| 25.9 | 202301300469 | Pipe temperature sensor assembly | | | 1 | \$7.26 | |
| 25.1 | 201221790249 | Electronic control box | | | 1 | \$10.89 | |
| 25.11 | 201321790144 | Main control board assembly | | | 1 | | |
| 26 | 201221790289 | Cover of electronic control box | | | 1 | \$3.63 | |
| 27 | 201221790250 | Cover of electronic control box | | | 1 | \$10.95 | |
| 28 | 201221890085 | Supporter of air passage | | | 1 | \$80.96 | |
| 28.1 | 201221790241 | Supporter of air passage | | | 1 | \$24.75 | |
| 28.2 | P0001397384 | Volute shell | | | 1 | | |
| 28.3 | 201221790242 | Supporter of air passage | | | 1 | \$23.94 | |
| 29 | 201221790245 | Supporter assembly of fan motor | | | 1 | \$11.25 | |
| 30 | 202221790021 | Water collector | | | 1 | \$11.70 | |
| 32 | 201221790256 | Fixing board (right) | | | 1 | \$5.78 | |
| 33 | 201221790248 | Hook of Panel | | | 2 | \$1.32 | |
| 34 | 201221790237 | Chassis assembly | | | 1 | \$164.34 | |
| 35 | 201521490085 | Evaporator coil assembly | | | 1 | \$200.48 | |
| 36 | 202403100888 | Electric heater | | | 1 | | 3.5KW |
| 37 | 202732390001 | Bearing bracket | | | 1 | \$1.65 | |
| 38 | 201100200047 | Cross flow fan | | | 1 | \$175.05 | GL-120*706-NX |
| 39 | 201221790244 | Cover of Bearing bracket | | | 1 | \$1.65 | |
| 40 | 201221790243 | Wind baffle board | | | 1 | \$9.08 | |
| 41 | 202301310068 | Discharge temperature sensor assembly | | | 2 | \$10.65 | |
| 42 | 202921790002 | Protection board for Water collector | | | 1 | \$26.22 | |
| 43 | 201221790254 | Cover of electronic control box | | | 1 | \$16.65 | |
| 44 | 201621290212 | 4-ways valve assembly | | | 1 | \$138.39 | |

This information is to be used by qualified HVAC technicians only and is subject to revision without notice

KTHM007-E3H2-BM - Parts List No. P5HM1404

Above prices are subject to S&H charges

DATE 14-03