



TROUBLESHOOTING

KLIMAIRE AIR CONDITIONER
DC INVERTER
SPLIT WALL-MOUNTED TYPE

9. Troubleshooting

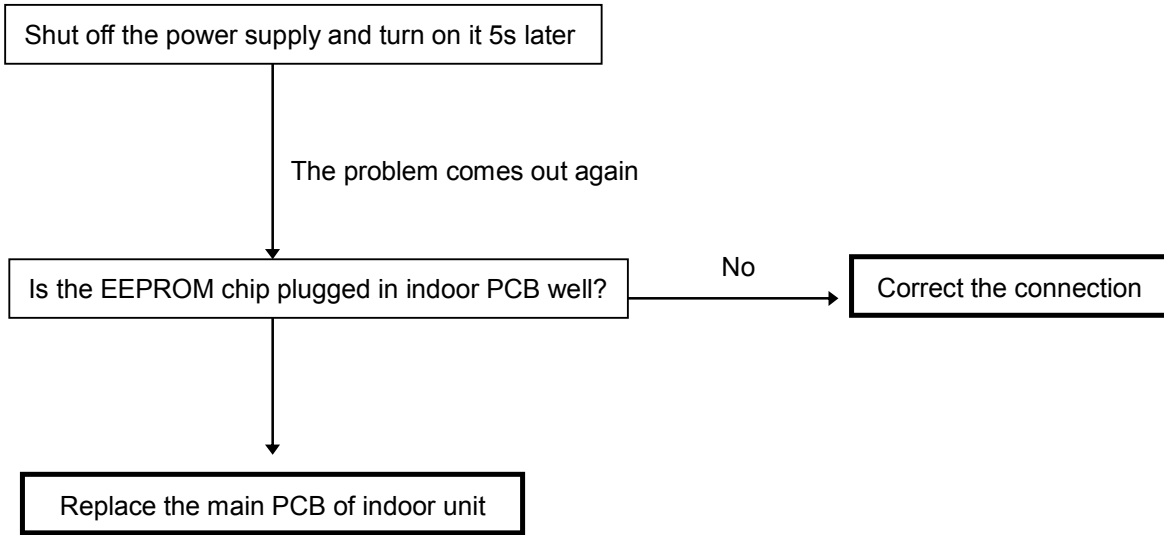
9.1 Indoor Unit Error Display

Display	LED STATUS
E0	EEPROM parameter error
E1	Indoor / outdoor units communication protection
E2	Zero-crossing signal error
E3	Indoor fan speed out of control
E5	Open or short circuit of outdoor temperature sensor or outdoor unit EEPROM parameter error
E6	Open or short circuit of room or evaporator temperature sensor
E7	Outdoor fan speed out of control
P0	IBM malfunction or IGBT over-strong current protection
P1	Over voltage or too low voltage protection
P2	Temperature protection of compressor top.
P4	Inverter compressor drive error

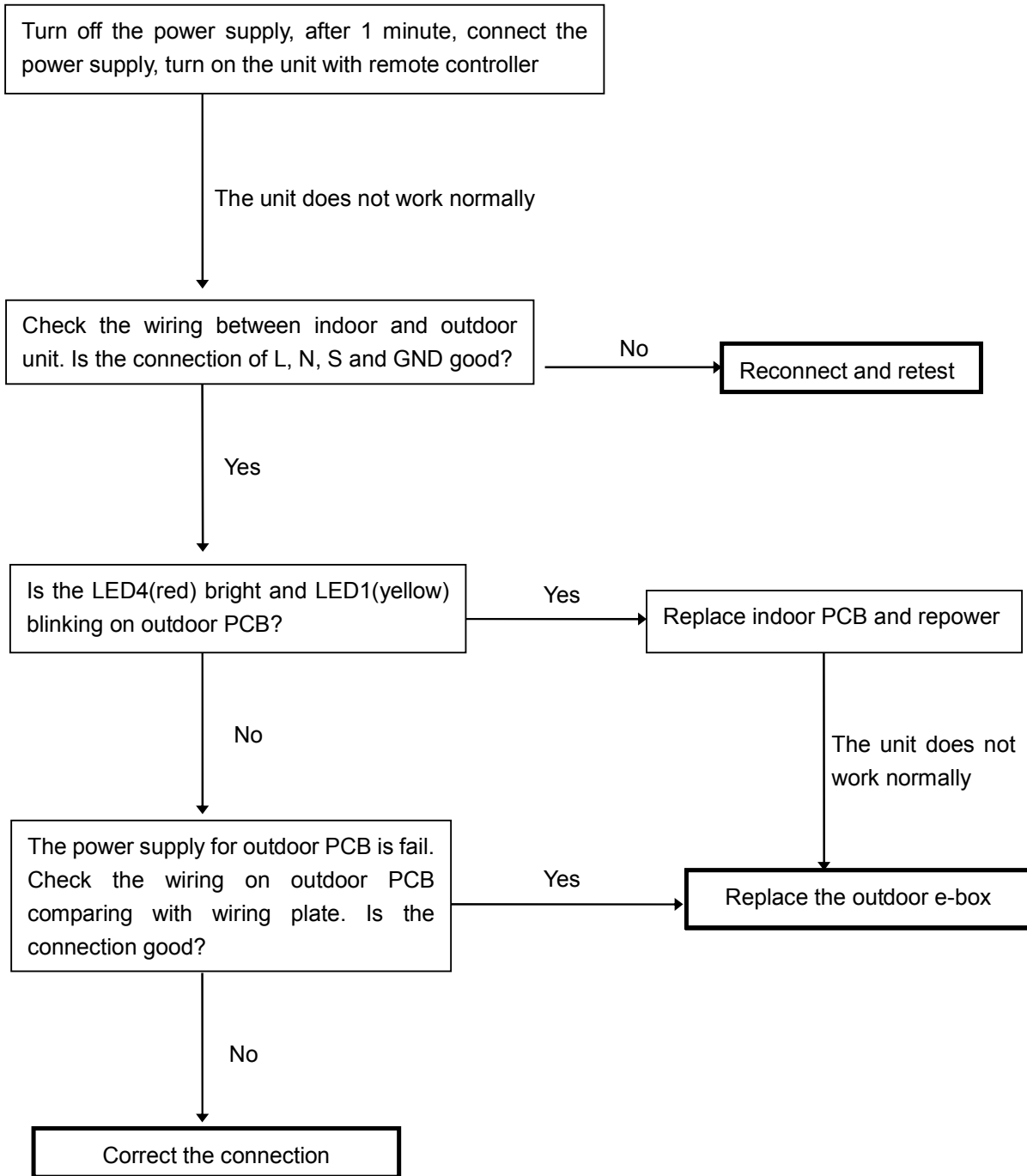
Note: E4 & P3: Reserved function.

9.2 Diagnosis and Solution

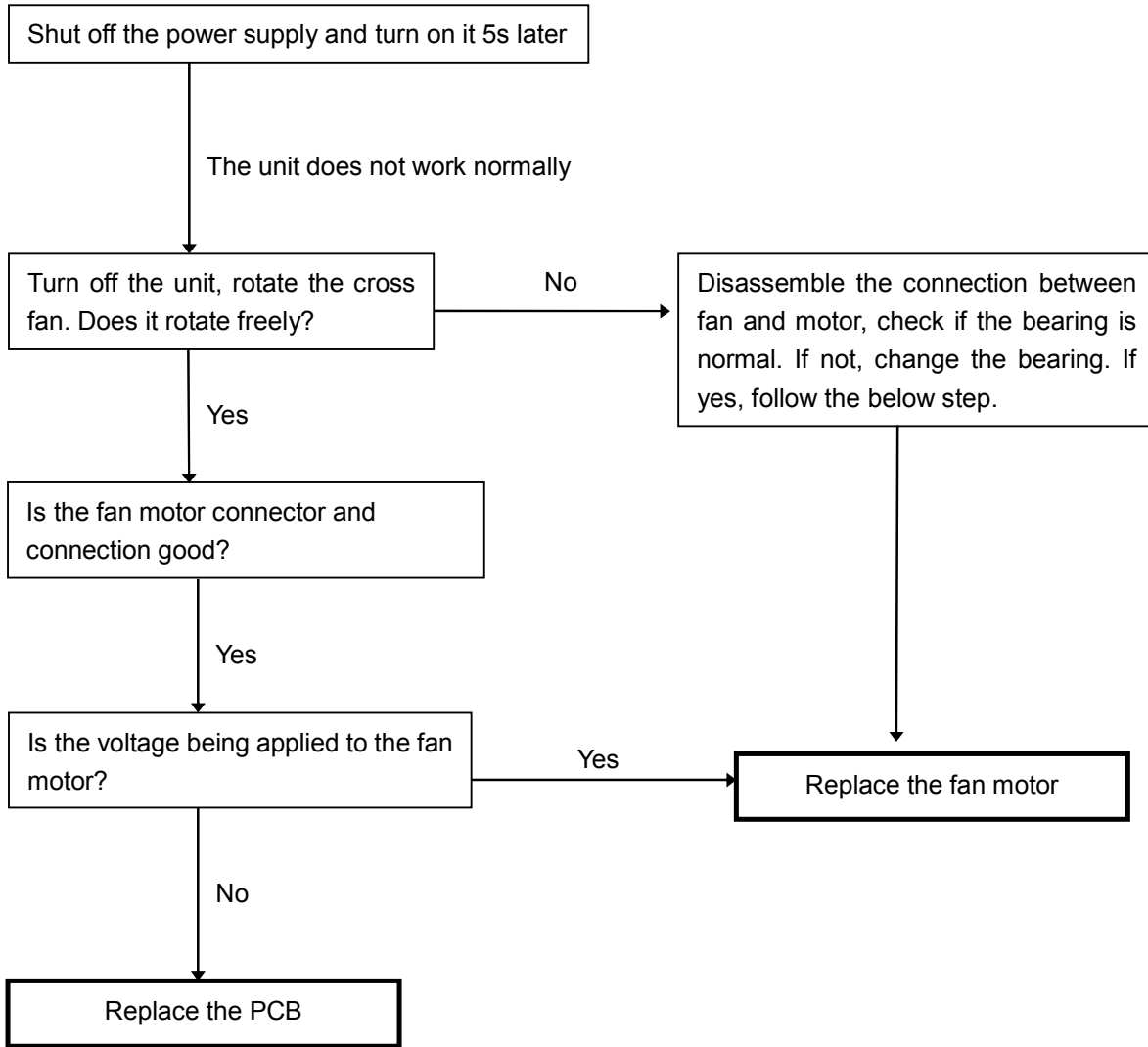
9.2.1 EEPROM parameter error diagnosis and solution



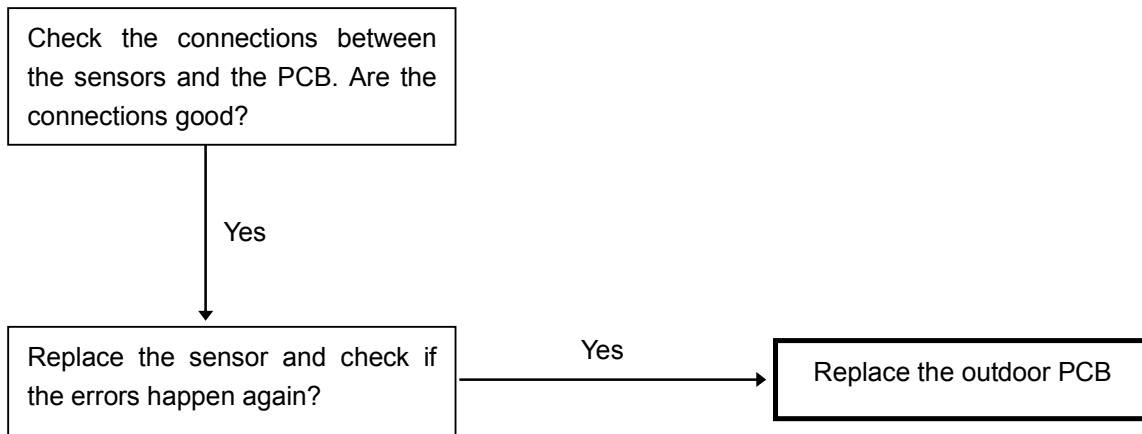
9.2.2 Indoor unit and outdoor unit communication protection error diagnosis and solution



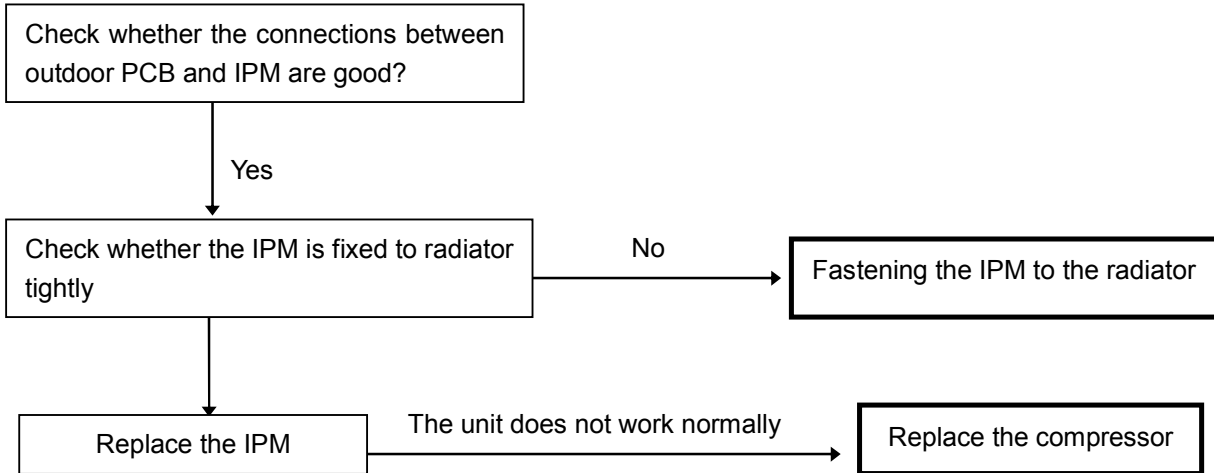
9.2.3 Fan speed has been out of control diagnosis



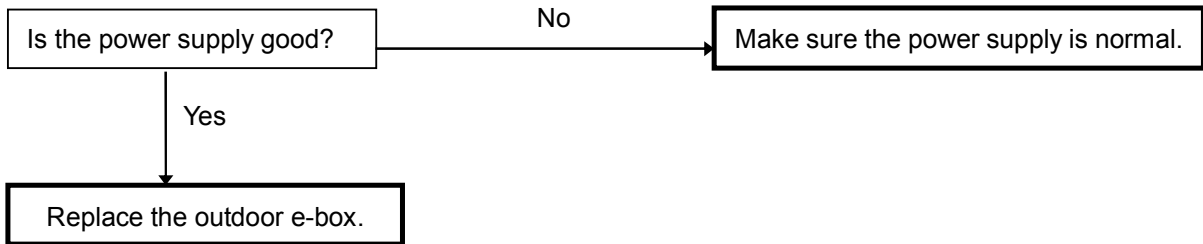
9.2.4 Open or short circuit of temperature sensor diagnosis and solution



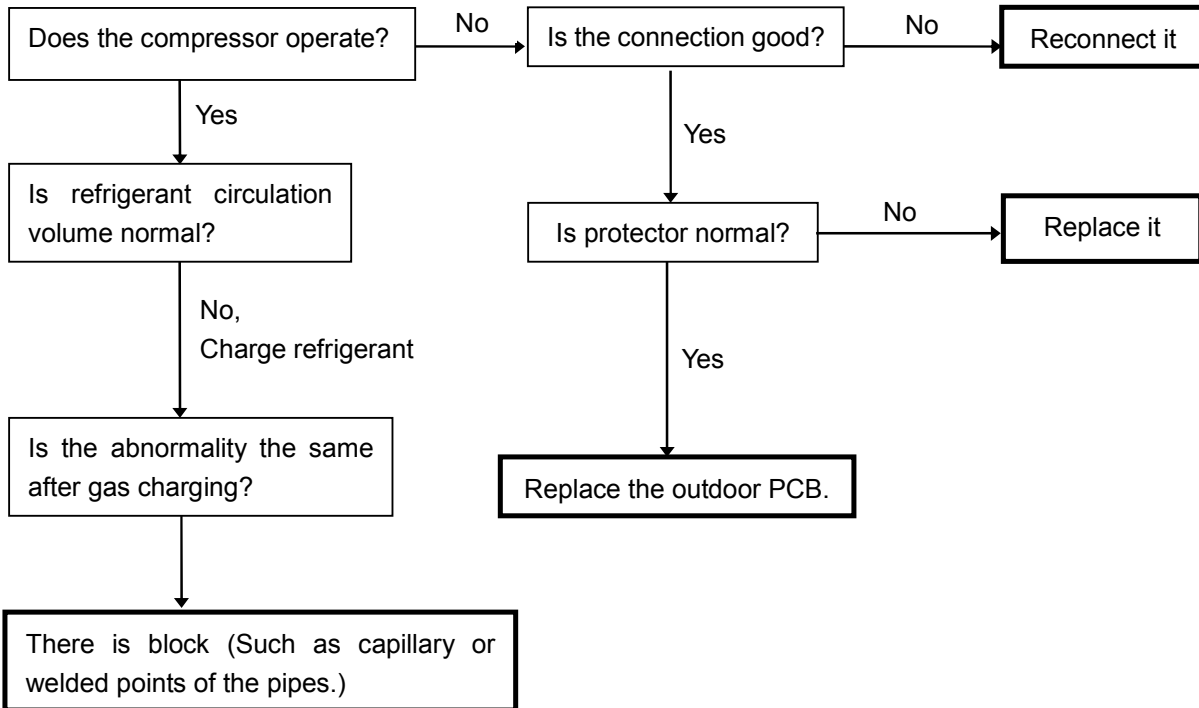
9.2.5 IGBT over-strong current protection diagnosis and solution



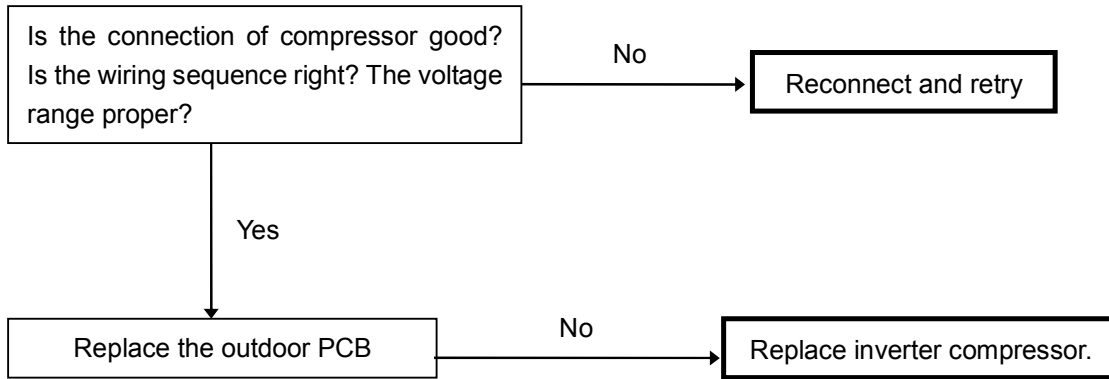
9.2.6 Over voltage or too low voltage protection diagnosis and solution



9.2.7 High temperature protection of compressor top diagnosis and solution



9.2.8 Inverter compressor drive error diagnosis and solution



9.2.9 Zero crossing detection error

This is alarm signal when the main chip can't detect over-zero signal. When such failure occurs, the main control board must have fault.

Appendix:

°C	10	11	12	13	14	15	16
F	48	50	52	54	56	58	60
°C	17	18	19	20	21	22	23
F	62	64	66	68	70	72	74
°C	24	25	26	27	28	29	30
F	76	78	80	82	84	86	88
°C	31	32	33	34	35		
F	90	92	94	96	98		



The Klimaïre logo is a registered Trademark of Klimaïre Products inc.
Copyright 2010 Klimaïre Products inc.

2190 NW 89 Place, Doral, FL 33172 - USA

Tel: (305)594-4972 Fax (305) 675-2212

www.klimaïre.com sales@klimaïre.com